

Scope of application

Model YT27 is a highly efficient pusher leg rock drill. It is mainly used in either rock drilling work such as mining and tunneling, or in railway, water conservancy construction projects and stone work. It is suitable for wet drilling on hard and medium hard rock, or for drilling horizontal or inclined blast holes. YT27 can be equipped with pusher leg FT160A and FY250 lubricator.

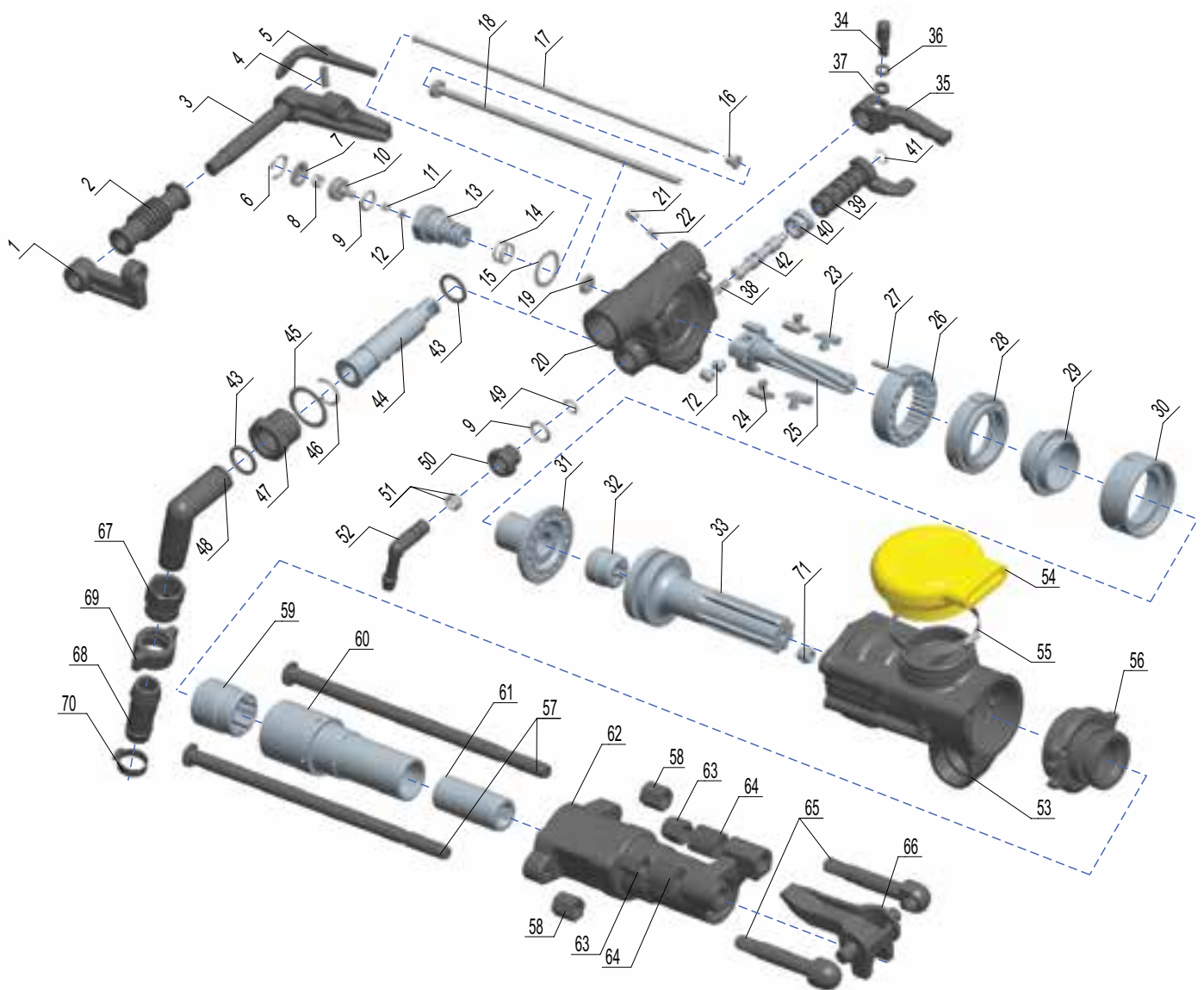
Specification

Pneumatic rock drill YT27		
Weight	27	kg
Dimension (L x W x H)	668 x 248 x 202	mm
Cylinder diameter	80	mm
Piston stroke	60	mm
Working pressure	4-6.3	bar(e)
Impact energy (at 6.3 bar (e))	≥70	J
Impact energy (at 5.0 bar (e))	≥64	J
Impact energy (at 4.0 bar (e))	≥48	J
Air consumption (at 6.3 bar (e))	≤85	l/s
Air consumption (at 5.0 bar (e))	≤57	l/s
Air consumption (at 4.0 bar (e))	≤50	l/s
Impact frequency (at 6.3 bar (e))	≥40	Hz
Impact frequency (at 5.0 bar (e))	≥39	Hz
Impact frequency (at 4.0 bar (e))	≥37	Hz
Torque (at 6.3 bar (e))	≥19	Nm
Torque (at 5.0 bar (e))	≥16	Nm
Torque (at 4.0 bar (e))	≥13	Nm
Water pressure	working pressure -1	bar(e)
Air hose inner diameter	25	mm
Water hose inner diameter	13	mm
Drilling diameter	34-45	mm
Max drilling depth	5	m
Working temperature	-30 to +50	°C
Shank size	H22x108±1	mm
Lubricator FY250		
Weight	1.2	kg
Capacity	0.25	litre



Secoroc YT27

Pneumatic rock drill



Ref.	Description	Qty	Prod. No.	Product code
1	Right handle	1	96000163	9603-1-3312310152
2	Shockproof handle	1	96000164	9603-1-3312310153
3	Left handle	1	96000165	9603-1-3312310154
4	Roll pin	1	96000527	9605-1-3312310708
5	Trigger	1	96000162	9603-1-3312310151
6	Circlip	1	96000183	9605-1-3312310173
7	Spring cap	1	96000169	9605-1-3312310159
8	Spring	1	96000170	9605-1-3312310160
9	O seal ring	2	96000482	9605-1-3312310627
10	Water valve	1	96000173	9605-1-3312310163
11	O seal ring	2	96000489	9605-1-3312310642
12	Rubber pad	1	96000175	9605-1-3312310165
13	Water valve body	1	96000148	9603-1-3312310137
14	O seal ring	2	96000502	9605-1-3312310671
15	Pad	1	96000184	9605-1-3312310174
16	Water tube sleeve	1	96000149	9603-1-3312310138
17	Water tube	1	96000172	9605-1-3312310162
18	Air tube assembly	1	96000150	9603-1-3312310139
19	Air tube pad	1	96000176	9605-1-3312310166
20	Back head	1	96000147	9603-1-3312310136
21	Dowel pin	1	96000180	9605-1-3312310170
22	Spring	1	96000179	9605-1-3312310169
23	Ratchet pawl	4	96000166	9605-1-3312310155
24	Conical spring	4	96000167	9605-1-3312310156
25	Rifle bar	1	96000138	9603-1-3312310126
26	Ratchet	1	96000131	9603-1-3312310119
27	Dowel pin	1	96000135	9603-1-3312310123
28	Valve cover	1	96000142	9603-1-3312310130
29	Valve	1	96000133	9603-1-3312310121
30	Valve chest	1	96000132	9603-1-3312310120
31	Valve sleeve	1	96000134	9603-1-3312310122
32	Rifle nut	1	96000814	9600-1-3312310009
33	Piston	1	96000139	9603-1-3312310127
34	Fixing pin	1	96000177	9605-1-3312310167
35	Operating handle	1	96000152	9603-1-3312310141
36	Spring pad	1	96000534	9605-1-3312310716

Ref.	Description	Qty	Prod. No.	Product code
37	Hex nut	1	96000524	9605-1-3312310704
38	Spring	1	96000157	9603-1-3312310146
39	Pressure regulating valve	1	96000159	9603-1-3312310148
40	Expansion ring	2	96000158	9603-1-3312310147
41	Retaining ring	1	96000160	9603-1-3312310149
42	Change over valve	1	96000161	9603-1-3312310150
43	O seal ring	2	96000486	9605-1-3312310633
44	Control valve	1	96000153	9603-1-3312310142
45	Pad	1	96000174	9605-1-3312310164
46	Retaining ring	1	96000182	9605-1-3312310172
47	Air pipe nut	1	96000823	9600-1-3312310020
48	Air pipe swivel	1	96000825	9600-1-3312310022
49	Retaining ring	1	96000156	9603-1-3312310145
50	Water pipe nut	1	96000155	9603-1-3312310144
51	O seal ring	2	96000499	9605-1-3312310667
52	Water pipe connector	1	96000154	9603-1-3312310143
53	Cylinder	1	96000140	9603-1-3312310128
54	Muffler	1	96000137	9603-1-3312310125
55	Hoop	1	96000542	9605-1-3312310725
56	Guiding sleeve	1	96000141	9603-1-3312310129
57	Side bolt	2	96000151	9603-1-3312310140
58	Hex thick nut	2	96000518	9605-1-3312310697
59	Rotation nut	1	96000146	9603-1-3312310135
60	Rotation sleeve	1	96000144	9603-1-3312310133
61	Shank bushing	1	96000145	9603-1-3312310134
62	Front head	1	96000143	9603-1-3312310131
63	Hex lock nut	2	96000531	9605-1-3312310713
64	Drill retainer spring	2	96000818	9600-1-3312310013
65	Drill retainer bolt	2	96000634	9600-1-3312311820
66	Drill retainer	1	96000635	9600-1-3312311821
67	Pipe connector	1	96000187	9605-1-3312310177
68	Conical hose nipple	1	96000186	9605-1-3312310176
69	Wing nut	1	96000185	9605-1-3312310175
70	Hoop	1	96000540	9605-1-3312310723
71	Sealing sleeve	2	96000543	9605-1-3312310726
72	Large sealing sleeve	1	96000544	9605-1-3312310727